



# NEWSLETTER

## Number 11

### Friday 9<sup>th</sup>

## February 2018

Wellesbourne CE Primary & Day Nursery School  
Mountford Close, Wellesbourne,  
Warwick, CV35 9QG  
Tel: 01789 840311  
E-mail: admin3073@welearn365.com

Dear Parents and Carers,

### OFSTED

Thank you to all the parents, pupils and staff who gave feedback to the Ofsted inspector when she came last week. She was very impressed with our school and we look forward to sharing the report with you when we receive it.

### GYMNASTICS



Four teams from Wellesbourne School were entered into the Wade Gymnastics Annual Schools Team Competition. One of our Year 2 teams came 3rd overall with Leonie winning 3rd for her vault and Molly B receiving the Artistry medal. A huge 'well done' to you all.



### INHALERS

If your child no longer needs to use an inhaler in school, please will you collect it from the school office.

### STARS OF THE WEEK

	Week 17	Week 18
6CH	Tom and Libby	Alex
6B	Martha	Morgan
5J	Georgia and Daniel	Holly and Corey
5C	Jake and Apatsa	Oliver B and Paul
4S	Oscar	Ede
4F	Matteo	Isla and William
3DW	Alex	Olivia and Caitlin
3J	Ewan	Oliver
2CP	Natalie	Leonie
2RP	Lilly	Harley
1N	Max	Olivia and Harvey
1P	Connor	Katie
RP	Addison	Oliver
RW	William	Natalie

### PLAYGROUND STARS

**Week 17** - Seb RP, Charlotte 5J, Ella 5J and Madison 5J.

**Week 18** - Eleanor 2CP

### FEEL GOOD FRIDAY CERTIFICATES

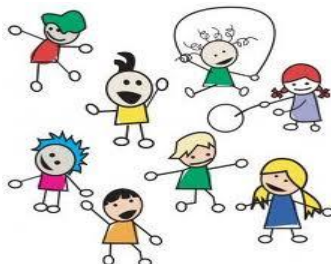
The 'Feel Good Friday' certificates went out last week and the children were delighted to receive them!

The deserving recipients were:

**Week 17** - Sam RP, Harry 2RP, Olivia 3DW, Chloe 4S, Jack 5C, Holly 5C and Freya 6CH.

**Week 18** - Kevin RP, Elena 2CP, Tyler 3DW, Sam 4S, Henry 5J and Alex 6CH.

### MID-DAY SUPERVISOR NEEDED



We are always looking to expand our team of Midday Supervisors (MDS). If you are interested, application forms are available from the school office for both part time and full time posts. A full safeguarding disclosure will be sought.

**Please come and see us and ask what the role entails.**

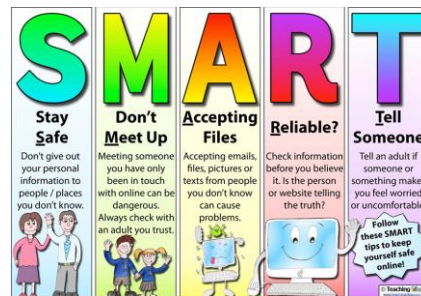
Thank you!



This half term we are thinking about 'Respect'

### E-SAFETY EVENING

Thank you to the parents (and children) who came to our E-Safety evening. Some of the things that the parents found most useful were settings on WhatsApp, top tips and the website 'internetmatters'. If you were unable to come, the PowerPoint presentation is on our website and a twitter link was sent out earlier in the week.



To assess the impact of training and internet safety day, we have put the quick survey out again via our website and twitter - it only takes around 5 minutes to complete. Please do complete it - especially if you have read the presentation or came to the evening.

### PHOTOGRAPHS

On Tuesday 27<sup>th</sup> February, children in Years 3,4,5 and 6 will be having their photographs taken in non-school uniform. On Wednesday 28<sup>th</sup> February children in Reception and Years 1 and 2 will be having their photographs taken in non-school uniform. If you have children in both Rec/KS1 and KS2 they will have their sibling photographs taken on Wednesday. This will mean any children from KS2 with siblings at the Annexe will need to wear non-school uniform on two days.

A reminder that half term week is 19<sup>th</sup> - 23<sup>rd</sup> February. School will be closed until Monday 26<sup>th</sup> February.

Have an enjoyable weekend.

Mr T Hewitt  
*Head of School*

Wellesbourne CE Primary & Nursery School is committed to safeguarding.

## ATTENDANCE

Parents must telephone the school office before **9.00am** on the first day of absence to report the reason. A reminder that parents do not have any entitlement to take their children on holiday during term time. Any application for leave of absence must establish that there are **exceptional circumstances** and the Executive Head Teacher Mrs Oscrift must be satisfied that the circumstances warrant the granting of leave. Please make sure you include an accompanying letter with your application form, explaining fully your reasons for applying for a leave of absence.

## YEAR 1 LEARNING

On internet safety day in 1N, we practised saying kind things about our friends. We learned about our digital footprint. We were surprised how many of our favourite activities were online. We made a "web of connections" to show how we are connected to lots of friends. This helped us understand the connectivity of the internet.



In our circle time we said...

Don't put unkind things on the internet because it will make people sad. It stays on the internet and everyone will see it so everyone will think you are unkind.

If someone says something mean don't say anything back.

Don't call someone on the computer if you don't know who they are because they could be unfriendly.

If something bad comes up and we don't like it press the dolphin.

Don't go online without your parents' permission.

Don't press a button on the computer if you don't know what it does.

If someone puts something mean on the computer tell your teacher or your mum or your dad.

## YEAR 6 LEARNING

In 6B this term we have been learning about 'light' in our Science lessons, and have been investigating how light travels in a straight line, and how it is reflected off of different surfaces. The class did a particularly good job in their class assembly, explaining about different light sources and how important light is in our everyday lives. They used a variety of lights in the assembly including Christmas lights, torches and even a lightsabre! 6B are now enjoying finding out all about the Ancient Greeks and will soon be debating whether it was better to be in the Athenian or Spartan Army.

## DIARY DATES

Please be aware that, sometimes, it is necessary to change these dates.

KS2 Assembly & certs RW Class Assembly & certs	Friday 9 <sup>th</sup> February 2:45pm Friday 9 <sup>th</sup> February 9.05am	Fish and Chips Quiz	Friday 2 <sup>nd</sup> March 7.30pm
Year 4,5 and 6 Disco	Tuesday 13 <sup>th</sup> February 5.00 - 5.45pm	Year 5 trip to Dorset	Friday 9 <sup>th</sup> - Monday 12 <sup>th</sup> March
KS2 4S Assembly & certs Annexe Certificates Assembly	Friday 16 <sup>th</sup> February 2:45pm Friday 16 <sup>th</sup> February 9.05am	KS2 Assembly & certs 2RP Class Assembly and certs	Friday 9 <sup>th</sup> March 2:45pm Friday 9 <sup>th</sup> March 9.05am
KS2 Non-school uniform Photographs and siblings	Tuesday 27 <sup>th</sup> February	Good Friday (Bank Holiday)	Friday 30 <sup>th</sup> March
Rec/KS1 Non-school uniform photographs and siblings	Wednesday 28 <sup>th</sup> February	Easter Holidays	2 <sup>nd</sup> April - 13 <sup>th</sup> April 2018 (school reopens on Monday 16 <sup>th</sup> April)
Half Term	19 <sup>th</sup> - 23 <sup>rd</sup> February 2018	Bank Holiday	Monday 7 <sup>th</sup> May
KS1 SATs evening	Tuesday 27 <sup>th</sup> February 5.30pm-6.00pm	Half Term	28 <sup>th</sup> May- 1 <sup>st</sup> June
KS2 Assembly & certs Annexe Certificates Assembly	Friday 2 <sup>nd</sup> March 2:45pm Friday 2 <sup>nd</sup> March 9.05am	Teacher Training Day 5	Friday 6 <sup>th</sup> July
		Term ends	Friday 20 <sup>th</sup> July

## DINNER MENUS - FEBRUARY 2018

Week beginning 12<sup>th</sup> February MENU 2 and Week beginning 26<sup>th</sup> February MENU 3  
see website/twitter (@wellesprimary)