



# NEWSLETTER #7

## Friday 6<sup>th</sup> December 2019

*'The fruit of the spirit is love, joy, peace, patience, kindness, goodness, faithfulness, gentleness and self-control.'* (Galatians 5:22)

Wellesbourne CE Primary & Day Nursery School  
Mountford Close, Wellesbourne,  
Warwick, CV35 9QG  
Tel: 01789 840311  
E-mail: [admin3073@welearn365.com](mailto:admin3073@welearn365.com)  
Web Site: [www.wellesbourneceprimary.co.uk](http://www.wellesbourneceprimary.co.uk)

### YEAR 5 CHRISTINGLE

Dear Parents and Carers,

We have reached the end of a very busy term and the children have worked really hard and the staff, as always, have given their all again. We have received lots of positive comments about our new Christmas arrangements. The KS1 performances were lovely and raised a lot of money for **Save the Children**. Families loved the Reception Christmas Sharing Afternoon - especially the singing! I have also heard lovely things about the church services on Thursday night and Friday. Well done to all the children involved.

I just wanted to update you on the building work before the holidays. The modular pieces of the hall are due to be lifted in on Monday 23<sup>rd</sup> December and the builders will likely be on site all day and on Christmas Eve too. Hopefully, when you return, it will look more like a hall. It will still be a few months before the internal works are finished so please bear with us next term.



On Thursday night, the Year 5 children took part in their own Christingle service at St. Peter's church. It was well attended and the singing was fantastic. Thank you to all the staff that made that possible and to all the family members who came to join in too.



### St Peter's Church Services -

We welcome you to our Crib Service at St Peter's Church Wellesbourne on Christmas Eve at 4pm.

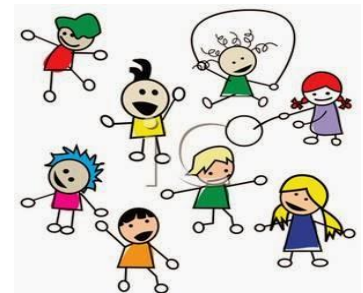
### CLUBS IN SPRING TERM

Clubs will remain the same as this term and will start on the second week back (13<sup>th</sup> January).

### LUNCHTIME LEGO CLUB HELP NEEDED!

We are still looking to set up a lunch time Lego club(s) and would like volunteers from the community to help run it - around 40 minutes - and any spare Lego you have at home donated to the school.

If you can help in any way, please leave a message with the office and we can arrange a meeting to start setting it up.



### SING-A-LONG



On Tuesday night of the final week of term, we were treated to excellent performances from budding musicians and singers at the annual Christmas Sing-a-long. The children amazed us with recitals on the piano, violins, cellos, guitars, clarinets, flutes and even percussion.

It was great fun and even the adults got to join in with the carols. A huge thank you to Mrs Battle for all her effort organising the whole thing - no mean feat!

### WELL BEING WEEK

When the children come back in January, the whole school will be involved in 'Well Being Week'. During this time, your children will look at healthy eating, staying safe online, mental health, how to relax and calm down when upset and also take part in some yoga from a specialist teacher who will be working with the classes.

We hope it will help them focus on staying healthy in body and mind! Look out for pictures in the first newsletter back!

### TEACHING ASSISTANT VACANCY

Unfortunately for our school, the lovely Mrs Deeley, who has worked at Wellesbourne for 15 years as a teaching assistant, is taking early retirement in mid-January to look after her grandchildren. We therefore have a vacancy on Monday, Tuesday and Wednesday mornings.

If you or anyone you know are interested, please see the office for an application form and job description. More information can be found on WM jobs.

### WOOSH PLAYWORKER NEEDED

We are still looking for two new WOOSH workers for Monday to Thursday mornings and afternoons to add to our excellent team of staff who provide 'wrap around' care.

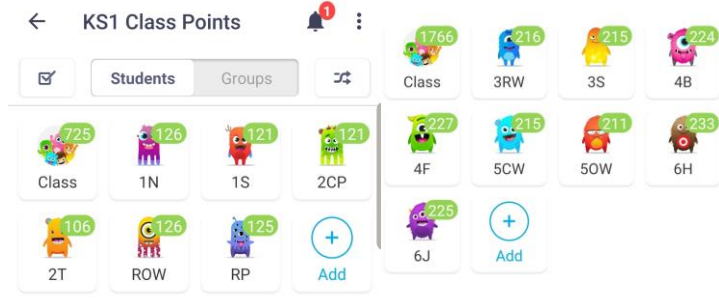
For full details, see the WM jobs website or come into the office for an application form and job description. **As always, a full DBS and references will be sought.**

*Have a great Christmas holiday and we looking forward to seeing you on Monday 6<sup>th</sup> January in 2020!*

**Mr Tim Hewitt**  
Head of School

Wellesbourne CE Primary & Nursery School is committed to safeguarding.

## END OF TERM DOJO POINTS



### AIR POLLUTION

We are still getting complaints from parents and residents about cars being parked up with their engines running around school. Could you please think of the noxious fumes that pour into the local environment and if twenty cars are sitting with engines running for twenty minutes, it will lead to a reduction in air quality. You will be aware of recent studies that show that the effect of NOX fumes in the proximity of schools has led to a significant increase in child asthma and a reduction in mental capacity.

*Therefore, can I please ask that once parked, you do not leave your engines running and find other ways of keeping warm?*



### MUSIC LESSONS

Just a reminder that payment for next terms music lessons with Warwickshire Music are now due.

### DIARY DATES

Please be aware that, sometimes, it is necessary to change these dates.

Christmas Holidays	<b>Monday 23<sup>rd</sup> December - Friday 3<sup>rd</sup> January</b>		Annexe Certificate Assembly KS2 Certificate Assembly	Friday 28 <sup>th</sup> February 9.05am Friday 28 <sup>th</sup> February 2.45pm
School Reopens for Spring Term for children WELLBEING WEEK	<b>Monday 6<sup>th</sup> January</b>		KS1 SAT's Evening	Tuesday 3 <sup>rd</sup> March 5.30 - 6.00pm
<b>No Annexe Cert Assembly</b> KS2 Cert Assembly	Friday 10 <sup>th</sup> January 9.05am Friday 10 <sup>th</sup> January 2.45pm		2T Class Assembly KS2 Certificate Assembly	Friday 6 <sup>th</sup> March 9.05am Friday 6 <sup>th</sup> March 2.45pm
<b>KS2 SAT's Evening</b>	Tuesday 14 <sup>th</sup> January		Parents Evening 1	Monday 16 <sup>th</sup> March 3.30 - 6.00pm
Annexe Assembly KS2 Cert Assembly	Friday 17 <sup>th</sup> January 9.05am Friday 17 <sup>th</sup> January 2.45pm		Parents Evening 2	Wednesday 18 <sup>th</sup> March 4.30 -7.00pm
1N Class Assembly (main KS2 Certificates Assembly	Friday 24 <sup>th</sup> January 9.05am Friday 24 <sup>th</sup> January 2.45pm		Annexe Certificate Assembly KS2 Cert Assembly	Friday 20 <sup>th</sup> March 9.05am Friday 20 <sup>th</sup> March 2.45pm
Young Voices to Genting Arena	Monday 27 <sup>th</sup> January		Annexe Certificate Assembly 6H Class Assembly	Friday 27 <sup>th</sup> March 9.05am Friday 27 <sup>th</sup> March 2.45pm
Sharing Learning with Parents	Tuesday 28 <sup>th</sup> January 2.00 - 3.00pm		Easter Holidays	Monday 6 <sup>th</sup> - Friday 17 <sup>th</sup> April
Half Term	Monday 17 <sup>th</sup> February - Friday 21 <sup>st</sup> February		INSET DAY	Friday July 3 <sup>rd</sup>
INSET DAY	24 <sup>th</sup> February 2020		School Closes for Summer Holidays	Friday 17 <sup>th</sup> July

### DINNER MENUS FOR JANUARY 2019

Next two menus:

Week beginning 6<sup>TH</sup> January - **\*\*\*NEW AUTUMN MENU 2\*\*\***

Week beginning 13<sup>th</sup> January - **\*\*\*NEW AUTUMN MENU 3\*\*\***

(see website/twitter (@wellesprimary))