



NEWSLETTER

Number 5

Friday 9th

November 2018

Wellesbourne CE Primary & Day Nursery School
Mountford Close, Wellesbourne,
Warwick, CV35 9QG
Tel: 01789 840311

E-mail: admin3073@welearn365.com

Web Site: www.wellesbourneceprimary.co.uk

Dear Parents and Carers,

We are now well into the term so I thought I would take this opportunity to thank all those parents, carers, grandparents, volunteers who help with swimming, come and hear readers and all the little 'extras' that we really need to help our school run effectively. Simply put, without your generosity our school would not be the busy, loving place that it is. There are, however, a few requests in the newsletter this week and I do hope that you will read them.

PARKING WITH ENGINES RUNNING

I know the days are getting colder, but there are a lot of parents who park with their engine running. While this may keep you warm, it not only wastes your fuel but pollutes the air around school in which hundreds of children will spend their day exposed to. In their interests, could you please reduce or completely stop being parked with the engine running.

LANGUAGE ON THE PLAYGROUND.

It has been brought to my attention that some parents are using language inappropriate for children during pick up and drop off times. We do not tolerate this at Wellesbourne School and it does not set an example to our children about the behaviour we expect.

CHILDREN IN NEED

This year for Children in Need we will be holding cake sales on Thursday 15th and Friday 16th November. We will be selling cakes in school for a donation of a minimum of 20p. Donations of cakes would be very much appreciated. Children will wear their school uniform as usual on this day.



ATTENDANCE

Parents must telephone the school office before 9.00am on the first day of absence to report the reason. **A reminder that parents do not have any entitlement to take their children on holiday during term time.**



FRIENDS' NEWS

Welcome back to school following the half term break! The Friends are now all systems go! Bag2School contributions got us off to a good start today, followed quickly by the Quiz Night tonight (09 Nov) which is promising to be a great evening out.

Next up in just a few weeks on December 1st, 2-4pm, is the Christmas Fayre! Please make a note on your calendar... this is going to be one you really don't want to miss! If you are available to lend a hand at this event, either setting up, running or packing away, please contact any member of the Friends team or email committee@friendsofwellesbourne.co.uk - we really value and appreciate any help we receive. *Carl Shorthouse*

STARS OF THE WEEK

	Week 7	Week 8
6CH	Byron	Luke
6B	Sophie	Theo & Oscar D
5J	Harry and Millie	Pola, Lottie & Sam M
5C	Ayven	Alice
4S	Joe	Summer
4F	Charlie	Chloe
3DW	Ellie	Chloe
3J	Niamh	Yasmina
2CP	Owen	Ruby
2P	Jake	Freya
1N	Orla	Natalie
1S	Addison	Douglas
RP	Freddie	Rosie
ROW	Harvey	Evan

PARENTS' EVENING

We are holding our first Parents' Evenings of the year next Monday 12th and Wednesday 14th November. If you haven't returned your slip to school the class teachers will allocate you a time slot that is still available. We look forward to seeing you.

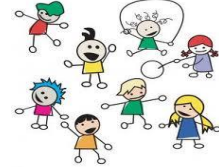
PLAYGROUND STARS OF THE WEEK

Week 7 - Oscar 1N, Sam 1S, Ellie 3DW, Niamh and Apatso 6CH.



This term we are thinking about **'Generosity'**

MID-DAY SUPERVISORS NEEDED



We are **always** looking to expand our team of Midday Supervisors (MDS). If you are interested, application forms are available from the school office for both part time and full time posts. A full safeguarding disclosure will be sought.

Please come and see us and ask what the role entails.

Thank you!

NURSERY NEWS



We have had a very busy start to the School year in Nursery including the installation of our new, all weather, Rainbow Room Garden. This week the children have enjoyed using their new area for the first time and it has been very popular! We are thrilled that our youngest children will now be able to access their own outdoor area all year round. Thank you to the Friends for helping to fund this. If you would like more information about our Nursery please feel free to give us a call on 01789 471122.

CARETAKER AND TA VACANCIES

We have temporary and permanent TA hours available and need additional cover for opening and locking the site. Please contact the office for further details

Our next newsletter will be on Friday 23rd November.

Have a good weekend.

Mr T Hewitt
Head of School

DIARY DATES

Please be aware that, sometimes, it is necessary to change these dates.

Friends' QUIZ Night	Friday 9 th November 7.30pm		Rec/KS1 Performance	Tuesday 11 th December 6.00pm
Parents' Evening	Monday 12 th November 3.30pm - 6.00pm		Rec/KS1 Performance	Wednesday 12 th December 2.00pm
Parents' Evening	Wednesday 14 th November 4.30pm - 7.00pm		KS2 Performance (Years 3 to 5)	Wednesday 12 th December 6.00pm
Children in Need - Cake Sale This is not non-uniform	Thursday 15 th November Friday 16 th November		KS2 Performance (Years 3 to 5)	Thursday 13 th December 6.00pm
Annexe Certificate Assembly KS2 Certificate Assembly	Friday 16 th November 9.05am Friday 16 th November 2.45pm		Pantomime for (Year 1 to Year 6) at the Spa Centre	Monday 17 th December
Non- School Uniform Day (Bottles)	Friday 23 rd November		Children's Christmas Dinner	Tuesday 18 th December
Annexe Certificate Assembly 4F Class Assembly	Friday 23 rd November 9.05am Friday 23 rd November 2.45pm		Christmas Singalong	Tuesday 18 th December
Non- School Uniform Day (Chocolates)	Friday 30 th November		Pantomime for Nursery and Reception in School	Thursday 20 th December
Annexe Certificate Assembly KS2 Certificate Assembly	Friday 30 th November 9.05am Friday 30 th November 2.45pm		Christmas Carol Service at St Peters Church	Friday 21 st December
Christmas Fayre	Saturday 1 st December 2.00pm - 4.00pm		Teacher Training Day	Monday 7 th January 2019
Rec/KS1 Performance KS2 Performance (Years 3 to 5)	Monday 10 th December 9.30am Monday 10 th December 1.30pm		Teacher Training Day	Friday 5 th July 2019

DINNER MENUS FOR NOVEMBER

Next two menus:

Week beginning 12th November - *****NEW MENU*** 2**

Week beginning 19th November - *****NEW MENU*** 3**

(see website/twitter (@wellesprimary))



SEVERE WEATHER

As the weather starts to change it is timely for us to remind you of the procedure if for any reason the School and Nursery need to be closed, although this is very rare. Firstly, ensure you have signed up to Parentmail for alerts or follow the school twitter account. If not ask for instructions at the school office. Secondly, subscribe to WCC text and twitter alerts through

www.warwickshire.gov.uk/schoolclosures