



NEWSLETTER #8

Friday 17th January 2020

'The fruit of the spirit is love, joy, peace, patience, kindness, goodness, faithfulness, gentleness and self-control.' (Galatians 5:22)

Wellesbourne CE Primary & Day Nursery School
Mountford Close, Wellesbourne,
Warwick, CV35 9QG
Tel: 01789 840311
E-mail: admin3073@welearn365.com
Web Site: www.wellesbourneceprimary.co.uk

Dear Parents and Carers,

Welcome Back! It has already been a busy time back at school and the children have been working very hard.

2CP AND WELL-BEING WEEK

Last week, the children across the whole school looked at how to look after themselves and each other in our first ever 'Well-being Week'. The children have been doing activities linked to healthy eating, physical activity, staying safe online, air pollution and mental well-being.



2CP made smoothies of their own design and had great fun choosing various fruit combinations to put in their creation. They also worked on data handling by surveying the class and seeing which their favourite fruit was.



MRS COOKE OPERATION

At the end of next week, Mrs Cooke will have an operation and will be off school for a few weeks. Miss Scott will assume the role of Acting Assistant Head and Mrs Newman will be acting Key Stage One leader.

We hope Mrs Cooke will be able to return after half term.



MUSIC LESSONS

Just a polite reminder that payment for this terms music lessons with Warwickshire Music are now due.



ATTENDANCE

Parents must telephone the school office before **9.00am** on the first day of absence to report the reason. **A reminder that parents do not have any entitlement to take their children on holiday during term time.** Any application for leave of absence must establish that there are **exceptional circumstances** and the Executive Head Teacher, Mrs Oscrift, must be satisfied that the circumstances warrant the granting of leave. Please make sure you include an accompanying letter with your application form, explaining fully your reasons for applying for a leave of absence.



SCHOOL PRAYER MEETING

School Prayer meeting will be held on Friday 24th January at 9am in the WOOSH room. If you would like to come and join some members of St Peter's church and parents to pray for the school why not come along?

EARRINGS

Hopefully all parents have received the letter about the change of policy to earrings. To summarise, we are allowing plain metal studs only and only if the child is able to remove them themselves. Children who are in the early stages of having their ears pierced can wear tape but as soon as they are able to remove them, they should.

SHARED LEARNING

On Tuesday 28th January, we will have another chance for you to pop into school and see your child's books whilst they are in there. It will be from 2:30 to 3.00 as per usual. You should have received a letter today explaining it further.

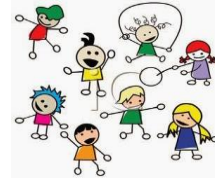
MESSAGES

If your child is going home with someone else please inform us as early as possible. Tell the person on the door first thing in the morning or send in a note with your child for their class teacher. Please **DO NOT** contact the school office except in an emergency. It can be very difficult to pass on these messages to classrooms during the school day as staff are busy teaching.

LUNCHTIME LEGO CLUB HELP NEEDED!

We are **still** looking to set up a small lunch time Lego club(s) to help children and would like volunteers from the community to help run it - around 30 minutes. If anyone has any spare Lego at home they could donate to the school it would be much appreciated.

If you can help in any way, please leave a message with the office and we can arrange a meeting to start setting it up.



WOOSH PLAYWORKER NEEDED

We are still looking for two new WOOSH workers for Monday to Thursday mornings and afternoons to add to our excellent team of staff who provide 'wrap around' care.

For details, come into the office for an application form and job description. **As always, a full DBS and references will be sought.**

INSET DAYS for 2020-2021

We have set three of our INSET days for next year. Unfortunately, we are still waiting for external suppliers to confirm other dates for our staff training for other dates.

Tuesday 1st September 2020

Monday 4th January 2021

Friday 2nd July 2021

Have a great weekend.

**Mr Tim Hewitt
Head of School**

Wellesbourne CE Primary & Nursery

WELL BEING WEEK YEAR 4

As mentioned on the first page, the focus for last week was 'Well-Being' week. In 4B, they have done a lot of work on online safety through a text and made pledges to their online behaviour in the future. Below is the display in the classroom with their pledges on the little stars.



In 4F, they were looking at fizzy drinks and how much sugar is in 100ml of each drink. Below you can see the display the children created which illustrates how much sugar is in each type - scary when you think a can will be three times that and a small bottle will be five times as much sugar!



DIARY DATES

Please be aware that, sometimes, it is necessary to change these dates.

1N Class Assembly (main KS2 Certificates Assembly	Friday 24 th January 9.05am Friday 24 th January 2.45pm		2T Class Assembly KS2 Certificate Assembly	Friday 6 th March 9.05am Friday 6 th March 2.45pm
Young Voices to Genting Arena	Monday 27 th January		Parents Evening 1	Tuesday 24 th March 3.30 - 6.30pm
Sharing Learning with Parents	Tuesday 28 th January 2.30 - 3.00pm		Parents Evening 2	Thursday 26 th March 4.00 - 7.00pm
Half Term	Monday 17 th February - Friday 21 st February		Annexe Certificate Assembly KS2 Cert Assembly	Friday 20 th March 9.05am Friday 20 th March 2.45pm
INSET DAY	24 th February 2020		Annexe Certificate Assembly 6H Class Assembly	Friday 27 th March 9.05am Friday 27 th March 2.45pm
Annexe Certificate Assembly KS2 Certificate Assembly	Friday 28 th February 9.05am Friday 28 th February 2.45pm		Easter Holidays	Monday 6 th - Friday 17 th April
KS1 SAT's Evening	Tuesday 3 rd March 5.30 - 6.00pm		INSET DAY	Friday July 3 rd
			School Closes for Summer Holidays	Friday 17 th July

DINNER MENUS FOR JANUARY 2020 - Next two menus:
 Week beginning 20th January - *****NEW AUTUMN MENU 1*****
 Week beginning 27th January - *****NEW AUTUMN MENU 2*****
 (see website/twitter: @wellesprimary)